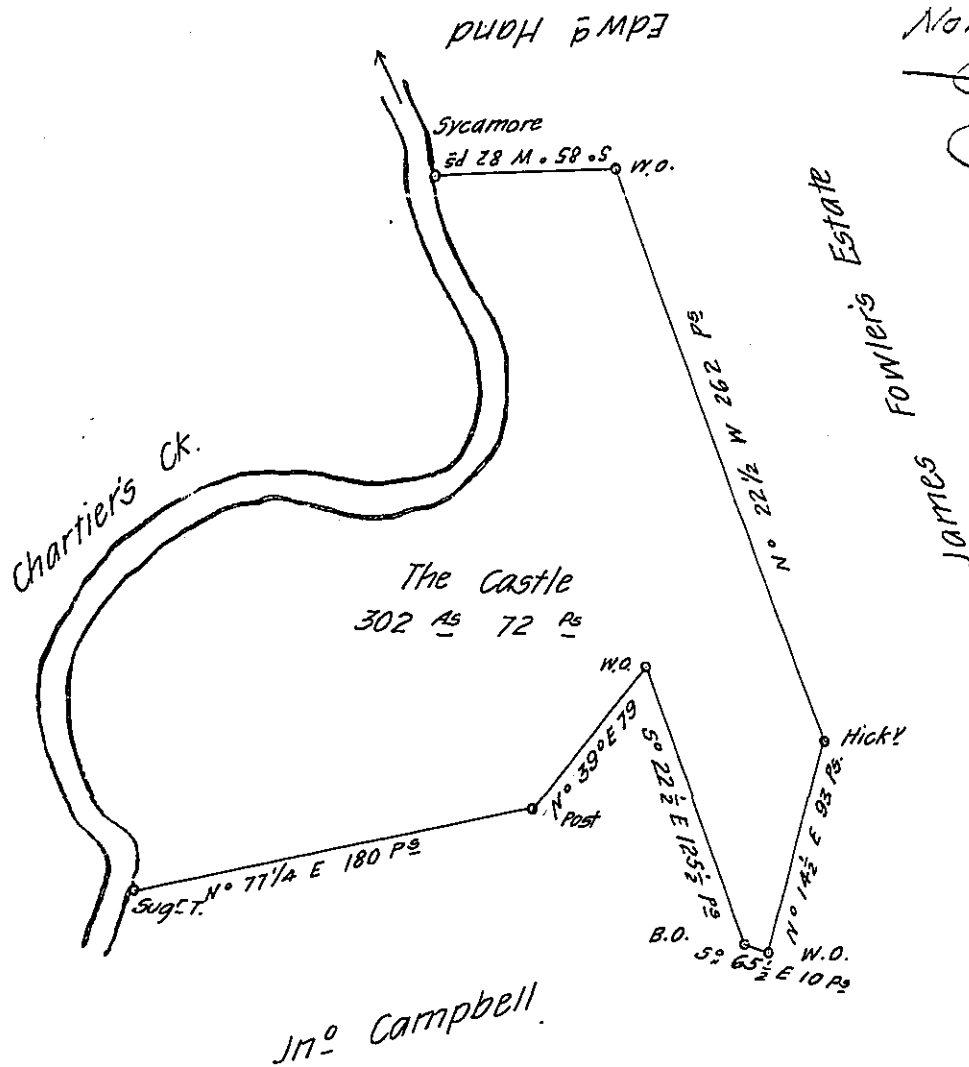


FORM NO. 1.

Courses & down y^e Ck

- S^o 6^o E 30 P^o
- S^o 34^o E 46 D^o
- S^o 11^o E 29 D^o
- S^o 15^o W 14 D^o
- S^o 31^o W 36 D^o
- S^o 78¹/₂ W 37 D^o
- N^o 38^o W 54 D^o
- S^o 62^o W 31 D^o
- S^o 55^o W 23 D^o
- S^o 32¹/₂ W 52 D^o
- S^o 13^o E 58 D^o
- S^o 46¹/₂ E 24 D^o
- S^o 8^o W 16¹/₂ D^o
- To y^e Sug^r T.



A draught of a Survey called "The Castle" situate on Chartiers Ck in Washington County contain^g 302 Ac^s 72 P^o strict Measure executed July 15th 1787 in Consequence of a Certif^e for 400 Ac^s granted to W^m Richmond by the Commiss^{rs} appointed by Virg^a to adjust the claims to unpatented lands in the Counties Monong^a Yohg^a & Ohio & duly entered &c.

Jm^o Lukens Esq^r

S. Gen^l

Presley Nevill }
 Matt^w Ritchie } Dfs.

IN TESTIMONY that the above is a copy of the original remaining on file in the Department of Internal Affairs of Pennsylvania, made conformably to an Act of Assembly approved the 16th day of February 1833, I have hereunto set my hand and caused the Seal of said Department to be affixed at Harrisburg, this fifth day of April 1907

James H. Brown
 Secretary of Internal Affairs.